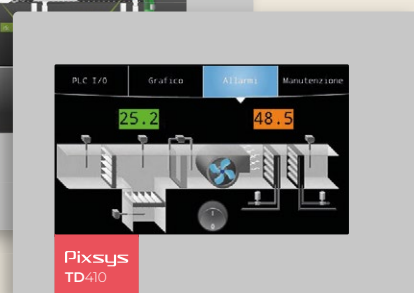
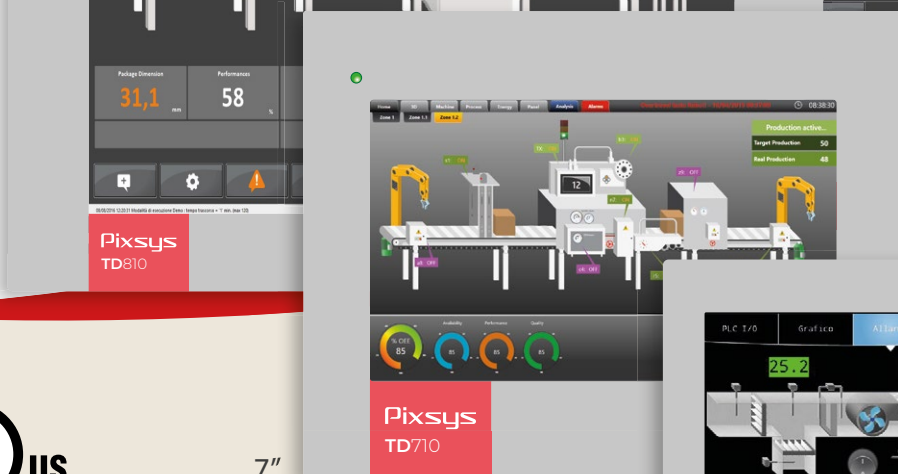
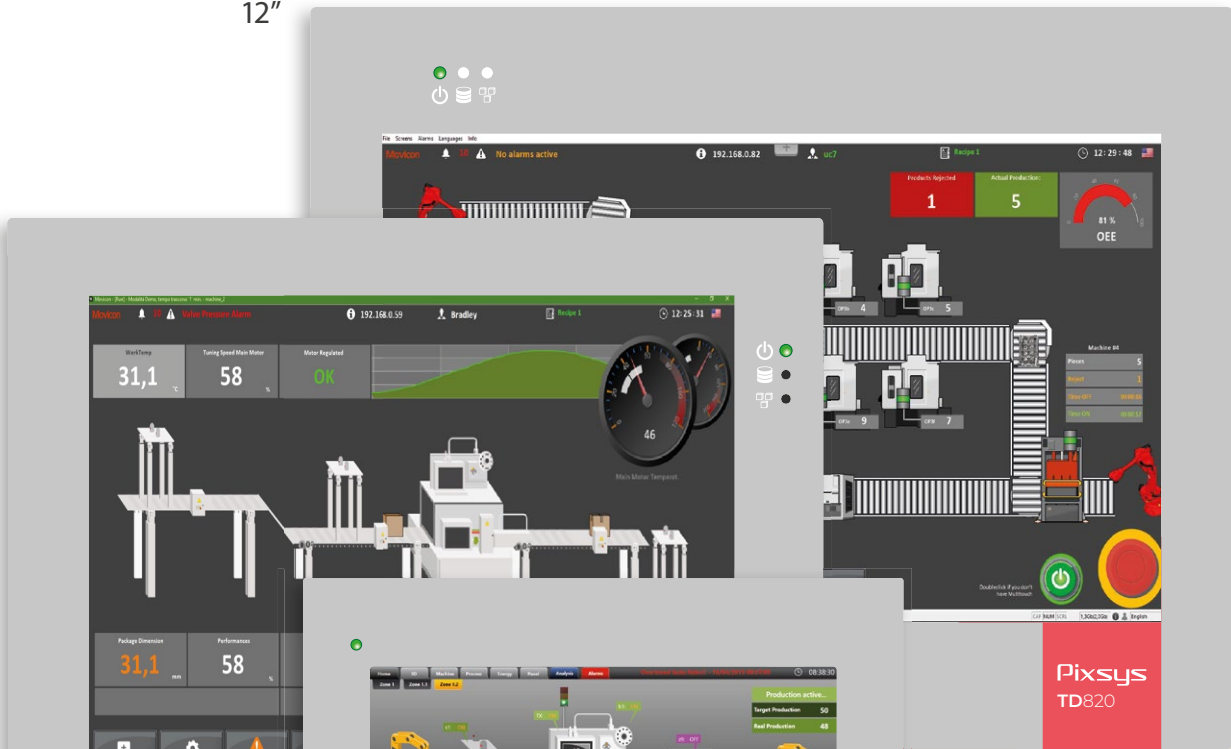


HMI

Arm Cortex[®]-A8
Windows[®] Embedded Compact (WEC)

12"

10"



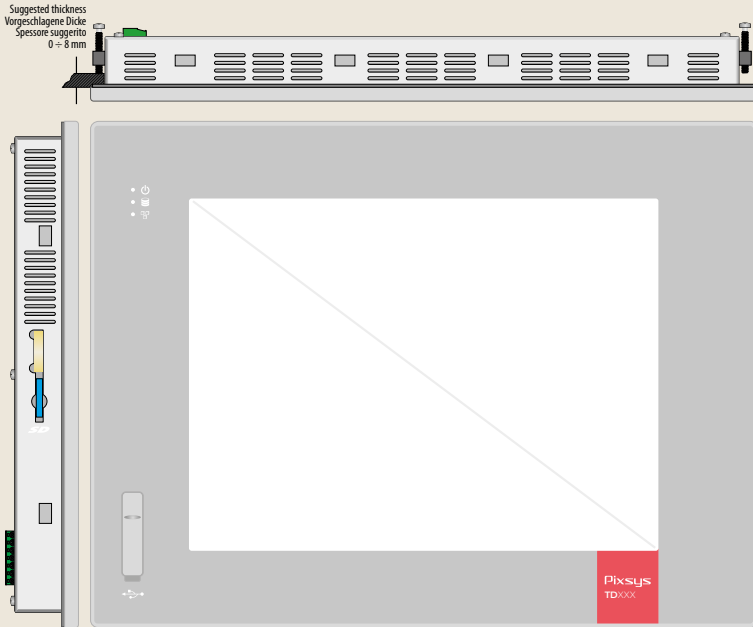
7"

4,3"

HMI mit integrierter Soft-PLC

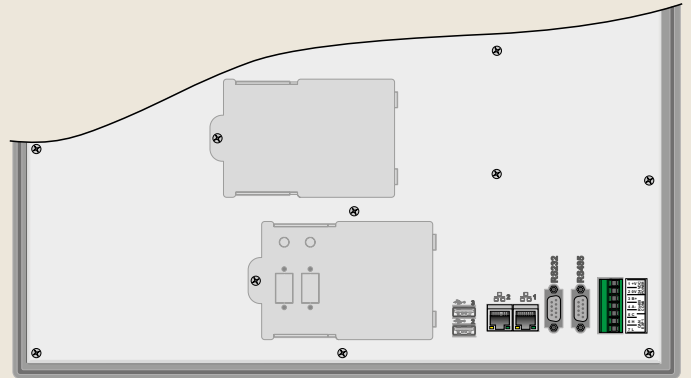
Entwicklungsumgebung nach Standard IEC61131-3 - Vektorgrafik
Option: analog-digitale I/O-Einsteckkarte
CPU 1GHz - Integrierter Grafikkbeschleuniger
Robustes Aluminiumgehäuse



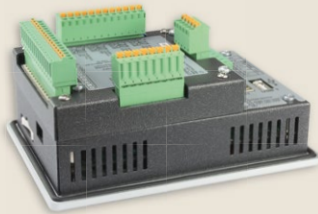


Abmessungen (mm)

Modell	L	H	W	L (Ausschnitt)	H (Ausschnitt)
TD410	140	100	29	132	90
TD710	204	160	35	181	144
TD810	274	216	35	259	202
TD820	317	256	35	302	242



TD410 (4,3")



TD710 (7")

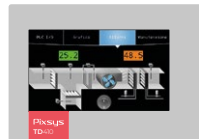


ETD1644-AD

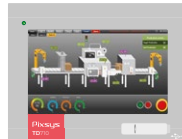
Option: I/O-Einsteckkarte

- 16 digitale I/O's
- 4 Universal-Analogeingänge,
- 4 Analogausgänge mA / V

Technische Daten



TD410



TD710



TD810



TD820

	TD410	TD710	TD810	TD820
ANZEIGE	4.3" TFT 480 x 272	7" TFT 800 x 480	10" TFT 800 x 600	12" TFT 1280 x 800
TOUCH-SCREEN	Resistiv	Resistiv	Resistiv	Resistiv
ABMESSUNGEN (mm)	140 x 100 x 29	204 x 160 x 35	274 x 216 x 35	317 x 256 x 35
MONTAGEAUSSCHNITT (MM)	132 x 90	181 x 144	259 x 202	302 x 242
SPANNUNGSVERSORGUNG	12..24 V AC / DC - 5,5 W	12..24 V AC / DC - 6,5 W	12..24 V AC / DC - 7,5 W	12..24 V AC / DC - 8,5 W
SERIELLE SCHNITTSTELLEN	RS485 - CAN - 1 USB	RS232 - RS485 CAN - 3 USB	RS232 - RS485 CAN - 3 USB	RS232 - RS485 CAN - 3 USB
ETHERNET	10 / 100 Mbit/s		2x 1 Gbit/s	2x 1 Gbit/s
ERWEITERUNG I/O SLOT 1	ETD1644			
ERWEITERUNG I/O SLOT 2	○	ETD1644		
SOFT-PLC	●	●	●	●
SOFTWARE				
BETRIEBSSYSTEM	Windows® Embedded Compact 7 (WEC 7)			
CPU	CORTEX-A8 @1.0GHz			
RAM	512 MB DDR3			
FLASH-SPEICHER / SPEICHERUNG	4GB			
PROGRAMMIERTOOLS				
LOGICLAB (Logik)	●	●	●	●
MOVICON CE (Logik - Grafik)	●	●	●	●
PROTOKOLLE	Modbus RTU - Modbus TCP/IP - CAN Open - OPC-UA client - ADS Twin CAT - B+R System 2000 PVI - S7/TCP - FINS Serial - FINS Ethernet - NJ Ethernet/IP - MELSEC Serial - MELSEC Ethernet - DF1 Protocol - Ethernet/IP			